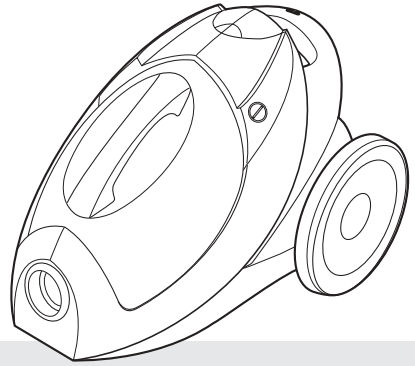


Orb vacuum cleaner



Please read and keep these instructions



UK

Helpline 0870 060 2604
Replacement parts 0870 167 6635

Ireland

1800 409119

getting the best from
your new cleaner...

If your cleaner isn't picking up as well as it should, please check

- **Filter**

It is important to clean it everytime you empty the dust container, otherwise the performance of the cleaner will be impaired. See page 5 - Cleaning the filter. A spare filter is provided

- **Blockages**

Check the nozzle, tubes and hose for blockages



Important safety instructions

The use of any electrical appliance requires the following of common sense safety rules.

Primarily there is danger of personal injury and secondly danger of damage to the appliance and property. These are indicated in the instructions text by the following two conventions:

WARNING: Danger of personal injury

IMPORTANT: Damage to the appliance

In addition we offer the following essential safety advice.

Location

- Do not use or keep this product outside when it is raining.
- Do not store the appliance near hot ovens or heating appliances.

Mains lead

- Do not allow the mains lead to become strained or run this appliance over it.
- If the electrical cable becomes damaged the complete cable assembly must be replaced. Do not attempt this task yourself, contact Morphy Richards using the helpline number.

Children

- Children do not understand the dangers associated with operating electrical appliances. Never allow children to use this appliance.

Other safety considerations

- Never use in the presence of explosive liquids or vapours.
- Never pick up inflammable or poisonous liquids such as petrol, copier toner, or other volatile substances. Never pick up acids, asbestos or asbestos dust.
- Always disconnect the appliance from the mains supply after use or prior to cleaning or replacing dust bags.
- The appliance should never be left running unsupervised.

- Repairs to electrical appliances are only to be undertaken by trained personnel. Unprofessional repairs can be dangerous for users.
- Use only genuine Morphy Richards spare parts and accessories

Product safety

- Never use the appliance without the filters installed.
- Never use the appliance to vacuum hot ashes, broken glass, sharp objects or liquids.
- Never modify the cleaner in any way.

Electrical requirements

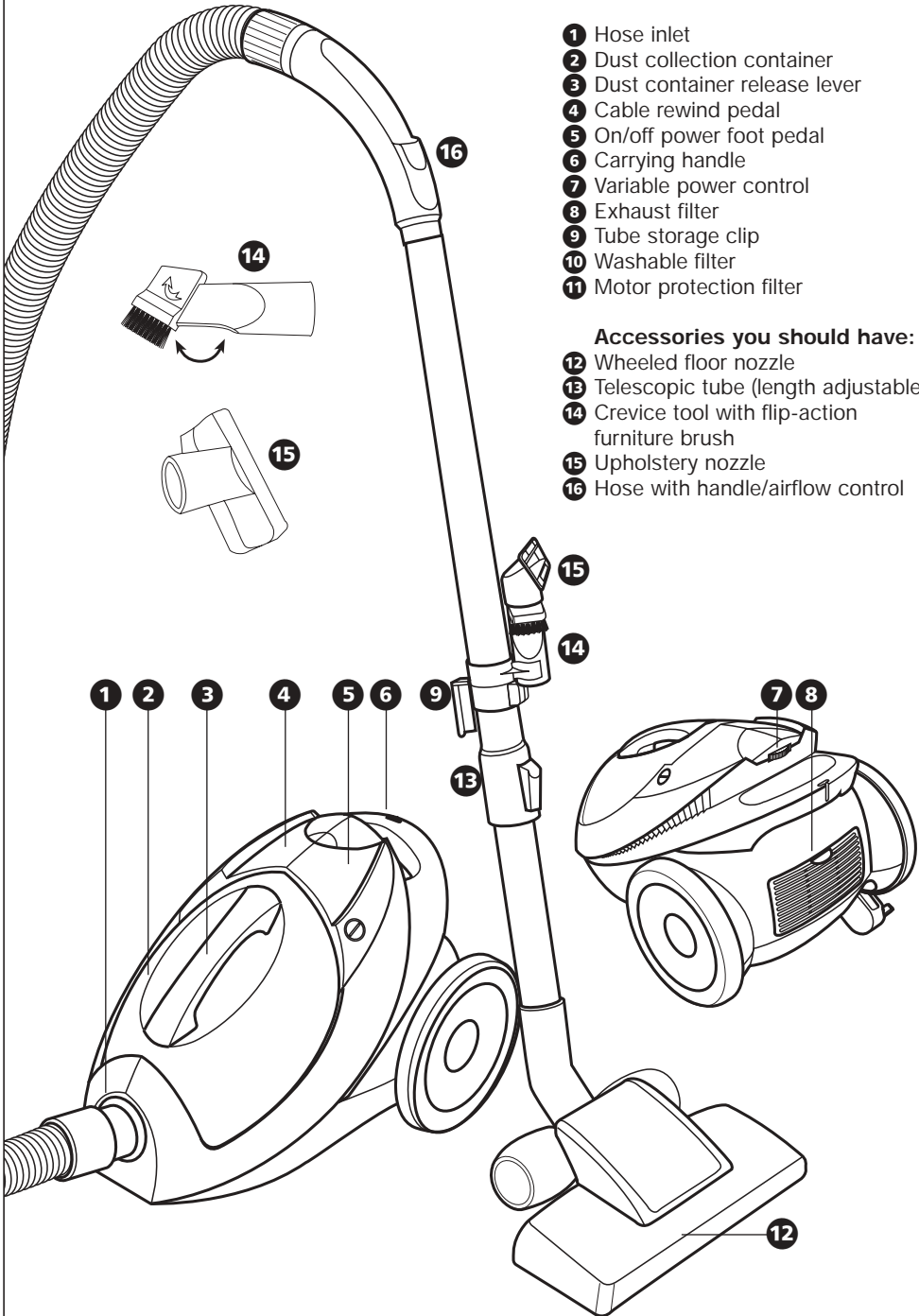
Check that the voltage on the rating plate of your appliance corresponds with your house electricity supply which must be A.C. (Alternating Current).

If the socket outlets in your home are not suitable for the plug supplied with this appliance, the plug should be removed and the appropriate one fitted.

If you cut off the plug and let go of the cable it will rewind into the machine. Therefore you must pull out a length of cable and secure it *before* cutting off the plug and refitting a new one.

WARNING: The plug removed from the mains lead, if severed, must be destroyed as a plug with bared flexible cord is hazardous if engaged into a live socket outlet.

Should the fuse in the 13 amp plug require replacement, a BS1362 13 amp fuse must be fitted.



Quick start

- 1 Assemble the nozzle, telescopic tubes and hose as shown **A**.
- 2 Pull out the mains cable to it's full length and plug in to the mains supply.
- 3 Switch on by pressing the foot pedal **5**.

Accessories

- 1 Fit the hose to the cleaner by inserting the hose end into the hose inlet **1**. When removing, squeeze the clips either side and pull.
- 2 Attach the telescopic tubes to the handle end of the hose. Extend to the required length by pressing down the slider release **13** and pulling out the tube **B**.

The hose handle features a regulator **16** which allows the suction to be reduced as required.

- 3 Attach the combination floor nozzle **12** to the tubes.

The crevice tool (for awkward places, behind radiators etc.) and the upholstery brush (for curtains and upholstery) are stored on the tubes. The crevice tool has a flip-action brush attachment for hard surfaces, pelmets, delicate objects etc **C**.

Controls

Power

The on/off control is operated by the foot pedal **5**.

Variable power control

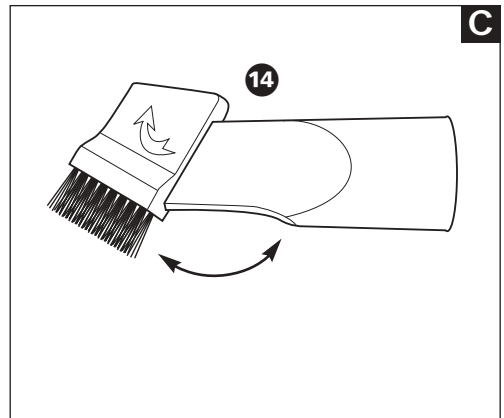
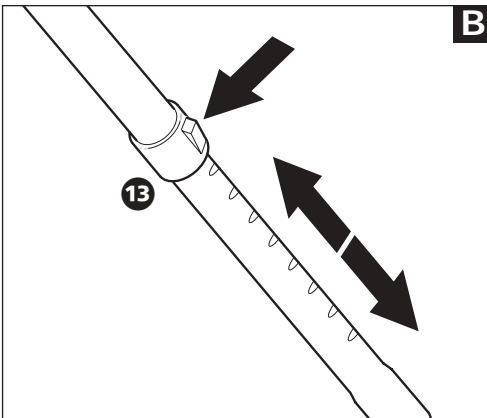
A rotating dial **7** varies the suction power as required. For example, maximum suction can be used for cleaning carpets, hard floors etc. and reduced suction for cleaning upholstery and curtains.

Suction can also be controlled using the airflow control on the handle **16**. Closed for maximum suction, open for reduced suction.

Automatic cable rewind

After use, unplug and press the cable rewind button **4** to retract the cable.

WARNING: When using the cable rewind, always hold the plug as the cable will rewind quickly.



Dust disposal

To obtain the best results from your cleaner empty the dust container regularly, otherwise the airflow and cleaning power will be reduced.

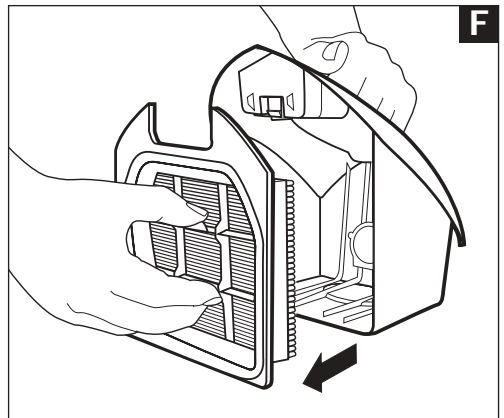
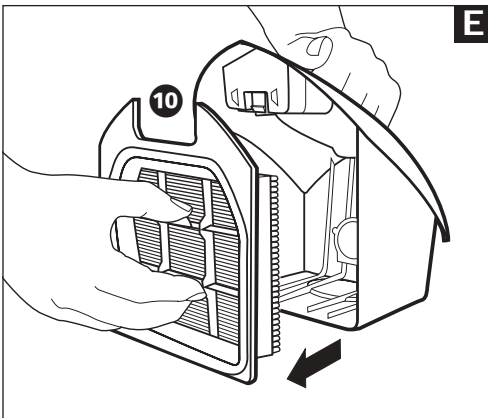
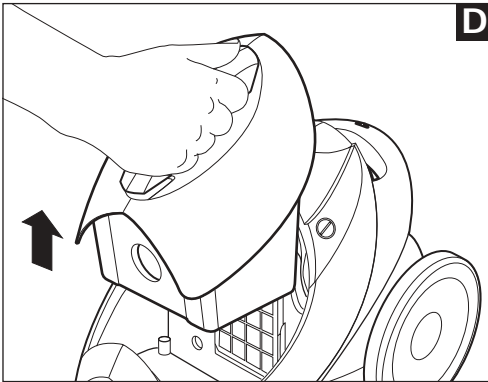
- 1 With the hose removed, lift the dust container using the handle **D**.
- 2 Holding the dust container over a dustbin, pull out the filter **10** to empty out the dust **E**.
- 3 Replace the filter and replace the dust container.

IMPORTANT: Do not operate your cleaner without the dust container fitted.

Cleaning the filter

Everytime the dust container is emptied, the filter should be cleaned. Lift the tab at the bottom of the filter to remove the cover **F**. Use the brush attached to the rear of the filter to brush the fine dust from between the the filter folds. Refit the front cover and re-install the filter into the cleaner.

The filter should also be washed regularly in warm water, but do not use detergent. Allow to dry naturally and ensure it is totally dry before replacing it. A spare filter is provided.



Cleaning the motor protection filter

The micro-filters must be cleaned everytime the dust container is emptied to remove the fine dust particles collected. This can be done by shaking them.

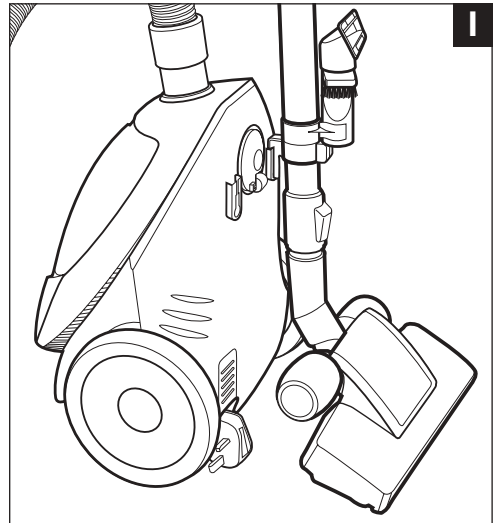
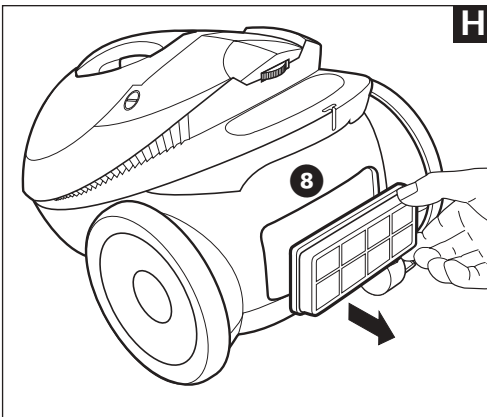
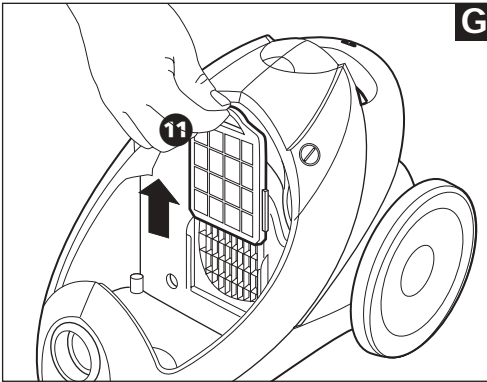
The motor protection filter **11** is in the dust container compartment. With the dust container removed, lift out the filter holder, remove the filter and shake to clean **G**.

The exhaust filter **8** is located at the back the cleaner. To remove, press down the catch and pull the cover away to remove the holder **H**. Remove the filter from the holder and shake to clean. The filter can be washed in warm water but do not use detergent. Allow to dry naturally and ensure it is totally dry before replacing it.

IMPORTANT: Do not operate without micro filters fitted.

Storage position

When finished, you can store accessories by locating the tube storage clip into the slot on the underside of the cleaner as shown **I**.



Care and maintenance

Your cleaner is manufactured to withstand normal day-to-day use, but an occasional wipe over with a damp cloth will help maintain its good looks. Abrasive cleaners should not be used.

Purchasing replacement parts

Use original Morphy Richards spares & consumables. These can be purchased by telephoning the Morphy Richards replacement parts line.

Helpline

If you have any difficulty with your appliance, do not hesitate to call us. We're more likely able to help than the store from where you bought the product.

Please have the following information ready to enable our staff to deal with your query quickly:

- Name of the product;
- Model number as shown on the underside of the appliance;
- Serial number.



Your two-year guarantee

- It is important to retain the retailers receipt as proof of purchase. Staple your receipt to this back cover for future reference.

Please quote the following information if the product develops a fault. These numbers can be found on the base of the product.

Model no. Serial no.

All Morphy richards products are individually tested before leaving the factory. In the unlikely event of any appliance proving to be faulty within 28 days of purchase it should be returned to the place of purchase for it to be replaced.

If the fault develops after 28 days and within 24 months of original purchase, you should contact the helpline number quoting model number and serial number on the product, or write to Morphy Richards at the address shown. You will be asked to return the product (in secure, adequate packaging) along with a copy of proof of purchase. Subject to the exclusions set out below (1-5), the faulty appliance will then be repaired or replaced and dispatched usually within seven working days of receipt.

If you suspect a fault, follow the simple checks detailed below before returning the appliance or calling the helpline.

- Check the dust container and filters for blockages.
- Check the hose and tubes for blockages.
- Check the plug is firmly in the socket and the supply is switched on.
- Make sure the socket is working by trying another appliance. If for any reason this item is replaced during the two-year guarantee period, the guarantee on the new item will be calculated from original purchase date. Therefore it is vital to retain your original receipt or invoice to indicate the date of initial purchase.

To qualify for the two-year guarantee the appliance must have been used according to the manufacturers instructions. For example filters must be cleaned and replaced regularly.

Morphy richards shall not be liable to replace or repair the goods under the terms of the Guarantee where:

- 1 The fault has been caused or is attributable to accidental use, mis-use, negligent use or used contrary to the manufacturers recommendations or where the fault has been caused by power surges or damage caused in transit.
- 2 The appliance has been used on a voltage supply other than that marked on the products.
- 3 Repairs have been attempted by persons other than our service staff (or authorised dealer).
- 4 Where the appliance has been used for hire purposes or non-domestic use.
- 5 The guarantee excludes consumables such as filters and the filter cover.

This guarantee does not confer any rights other than those expressly set out above and does not cover any claims for consequential loss or damage. This guarantee is offered as an additional benefit and does not affect your statutory rights as a consumer.

- This guarantee is valid in the UK and Ireland only.



For additional information on Morphy Richards products www.morphyrichards.co.uk

Morphy Richards products are intended for household use only

Morphy Richards has a policy of continuous improvement in product quality and design. The Company, therefore, reserves the right to change the specification of its models at any time.

morphy richards®

The After Sales Division,
Morphy Richards Ltd, Mexborough,
South Yorkshire, England, S64 8AJ

Helpline (office hours)
UK (local rate) 0870 060 2604
Republic of Ireland 1800 409119